



Creative thinking: Healthcare solutions

Applying UKIHMA's expertise to your biggest challenges in health and care

Advances in treatments, technology, organisation models offer new approaches for delivering excellence in health and social care – let UKIHMA's leaders work on your biggest challenges through a novel 'hackathon' style working session.

Drawing on the rich expertise and experience of our members in all aspects of healthcare design, build and delivery, we can work with you to creatively problem solve, address barriers to change and jointly prepare a refreshing, innovative range of options for collaboration.

About UKIHMA

- The United Kingdom International Healthcare Management Association (UKIHMA) is a membership trade organisation established over 8 years ago by Healthcare UK, part of the UK government.
- UKIHMA's diverse membership base has expert skills and experience ranging from strategic planning and feasibility studies, design and build, education and training, digital and med tech innovations through to longer term facilities management and value based assurance on all aspects of health and care.
- We are a solutions based organisation, creating tailored packages of support in response to clients specific requirements.
- Our support in creative problem solving is free of charge and will result in both new ideas for you to take forward and commercial business offers, at no obligation.



Exploring your challenges with the best of UK expertise

Our capabilities



Expert Clinical Advice



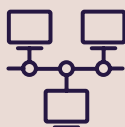
Financing &
Financial Modelling



Healthcare Facilities



Education and Training



Digital Technologies
and Data



Specialist Equipping

Our offer

We offer healthcare organisations new perspectives on health and care challenges, through creative solutions 'hackathon' style workshops. Our approach covers 4 key stages:

- **Scoping** - initial discussion to define the problem and frame potential solutions.
- **Exploring** - the hackathon style workshop(s) with UK experts to explore new and innovative approaches to address the problem.
- **Advising** - presentation and exploration of potential ideas, solutions and next steps.
- **Proposing** - selection of solutions and commercial business propositions for you to take forward and / or us to support.

Benefits

- Access to UK commercial and NHS expertise.
- External review and recommendations on your current and future needs.
- Menu of solutions and options for implementation.
- Opportunities for commercial business partnerships.
- No obligation to take forward our offers of support.
- Contact us at enquires@ukihma.co.uk to explore how we can help.

To discuss setting up a creative solutions workshop, please email :

Geraldine Marson, UKIHMA Membership Manager
(membership@ukihma.co.uk)